

Ce carnet comprend **28** pages

ind A : Diffusion pages 1 - 13 - 29 - 30

BETON Fc 28 = 25 MPa

ACIERS Fe 500

E			
D			
C			
B			
A	Ajouté réservation poutre 5 - Ajouté poutre 7-8	18/02/00	MD
IND	MODIFICATIONS	DATE	NOM

**UNIVERSITE de VALENCIENNES  
et du HAINAUT-CAMBRESIS**

**CONSTRUCTION d'un ATELIER RATTACHE  
au DEPARTEMENT d' I.U.T.**

**HAUTEUR du REZ  
ARMATURES Poteaux-Poutres-Linteaux**

**COLDEFY et Associés Architectes**

16 rue Gambetta  
59400 CAMBRAI  
Tél:03.27.81.15.98 Fax:03.27.81.50.91

**D.O.E**



PARC D'ACTIVITES DE  
CAMBRAI-CANTIMPRE  
B.P. 196  
59404 CAMBRAI Cedex  
TEL: 03.27.83.89.45  
FAX: 03.27.78.37.96

**AFF N**

**99.124**

**PLAN N**

**08<sup>A</sup>**

**ECH: 1/50**

**DATE 13/01/2000**

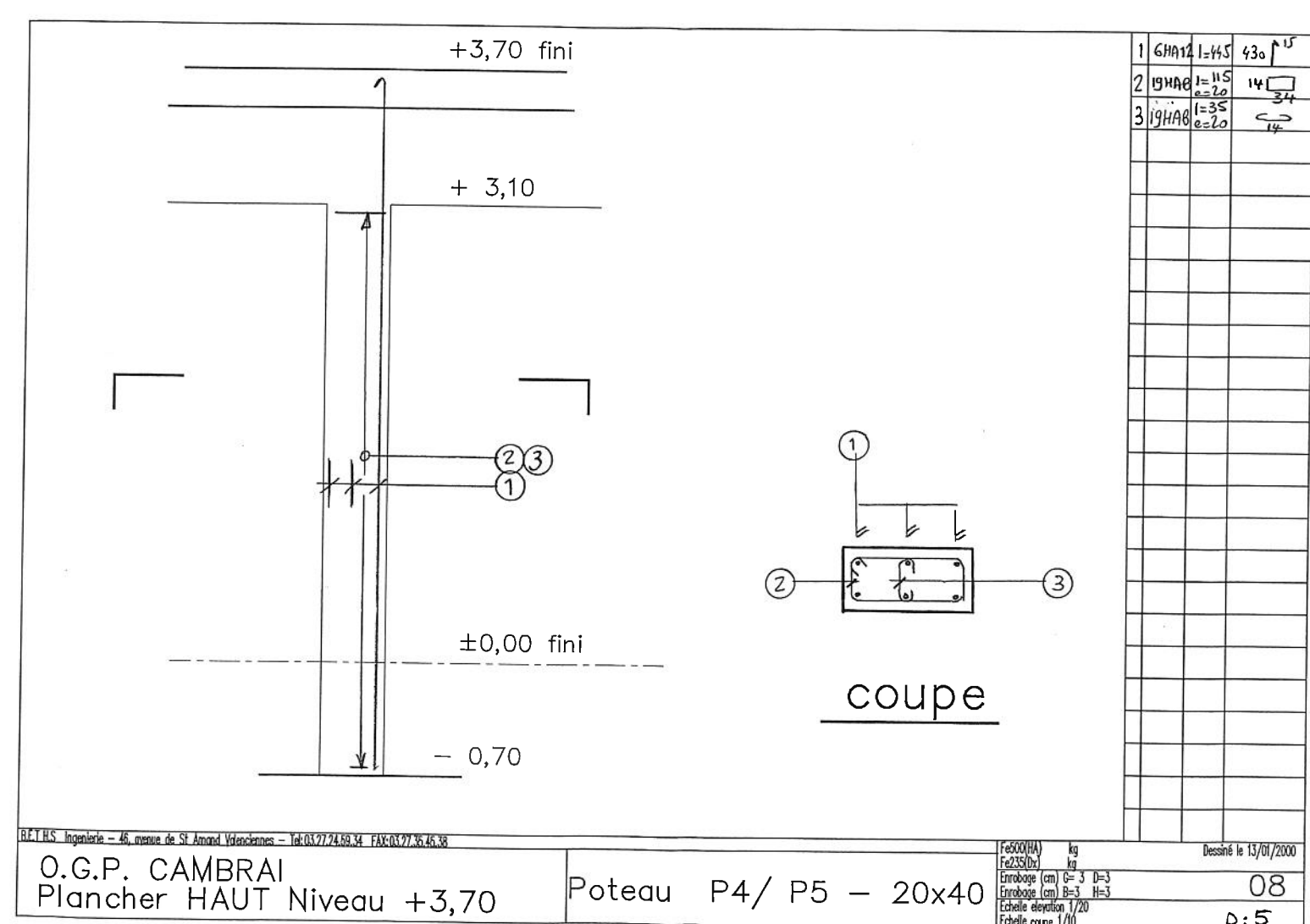
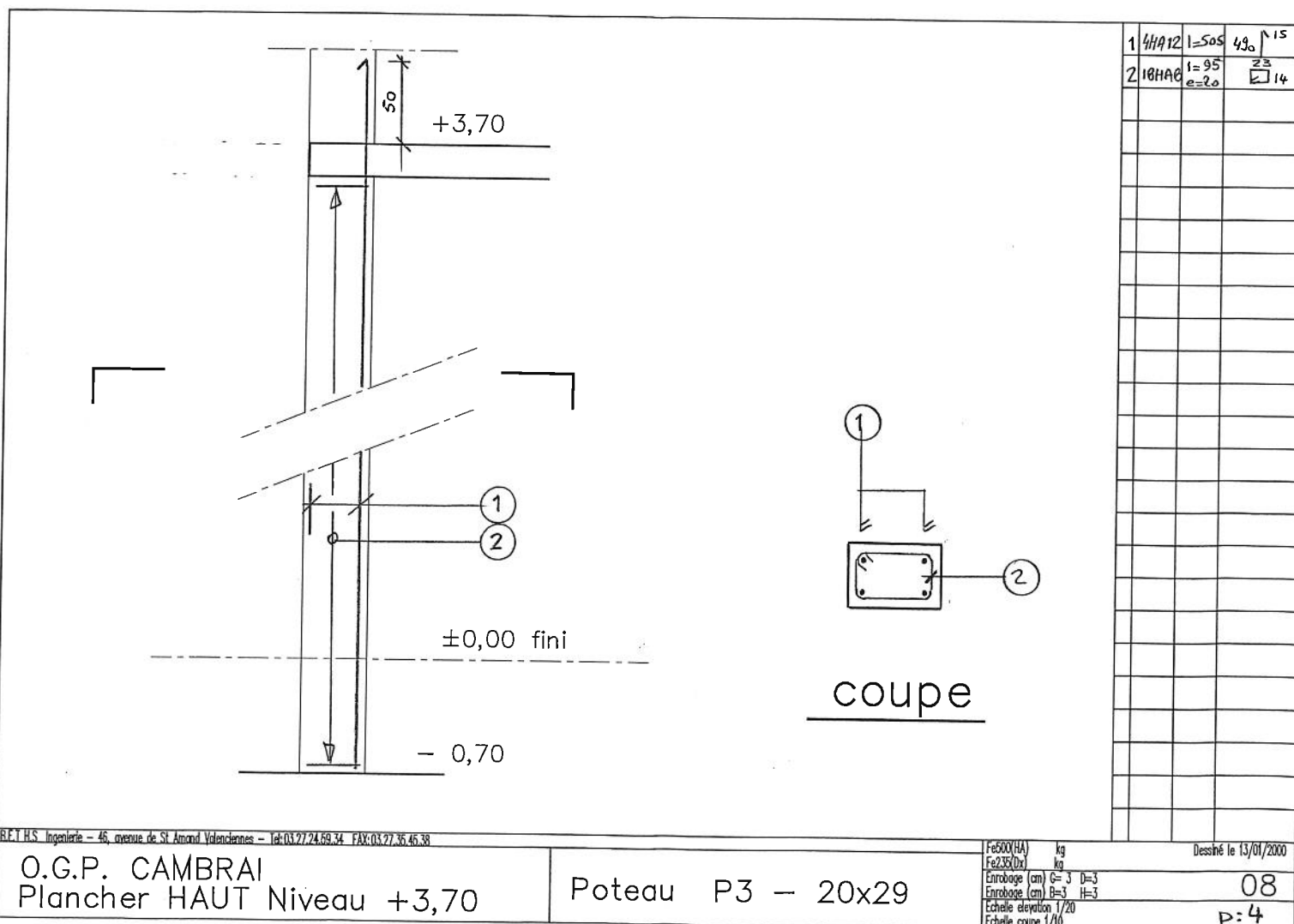
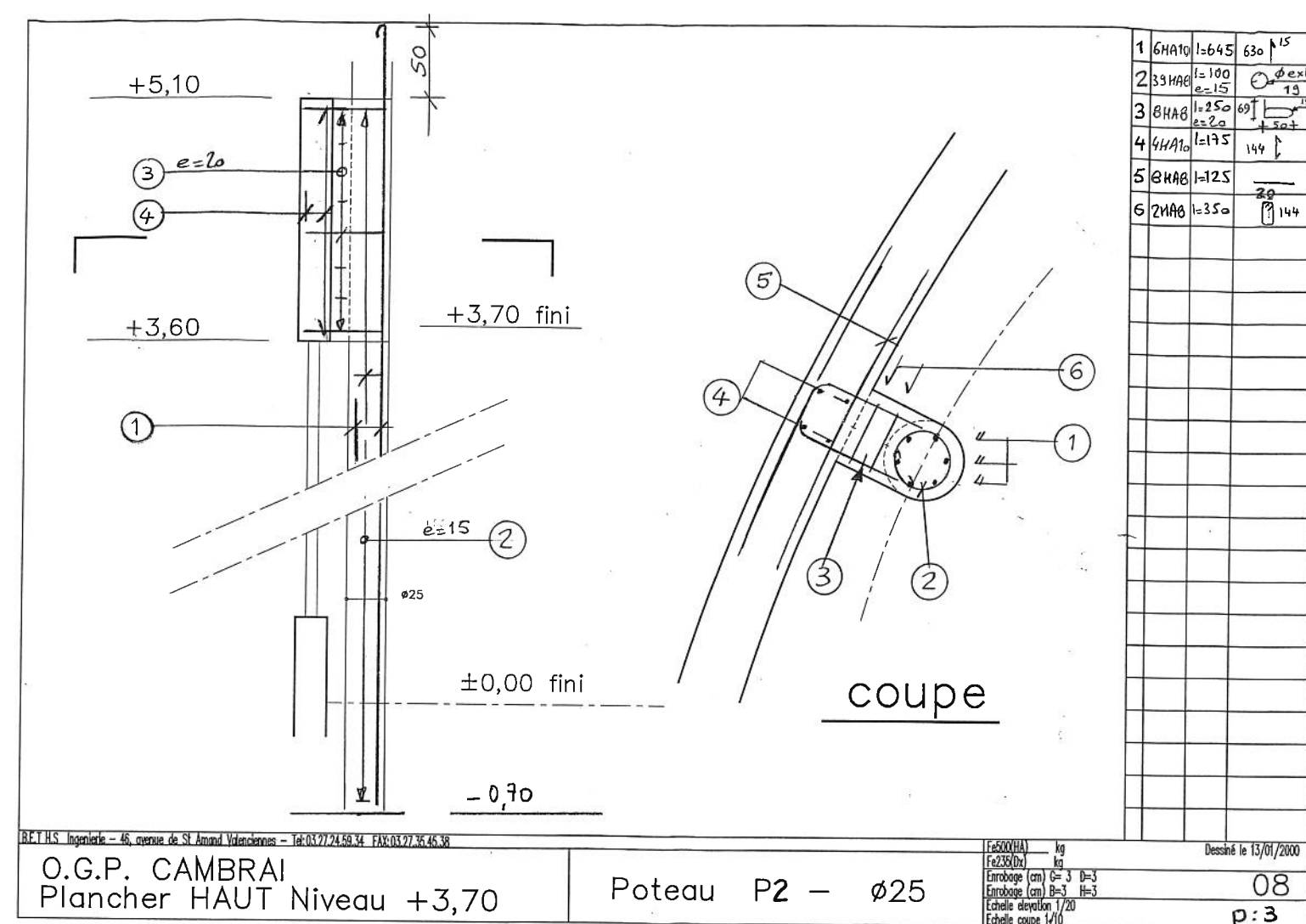
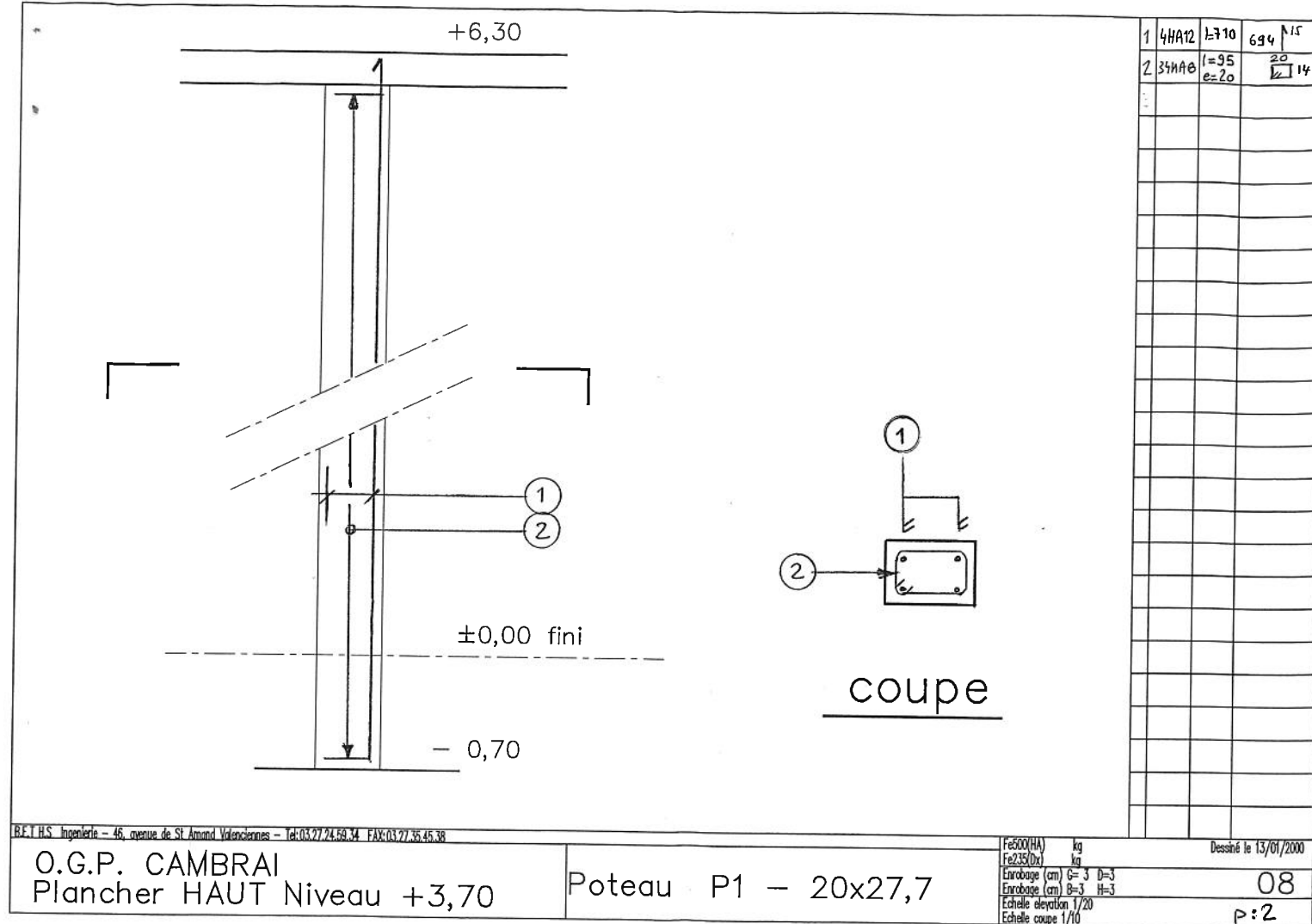
**BUREAU D'ETUDE:**

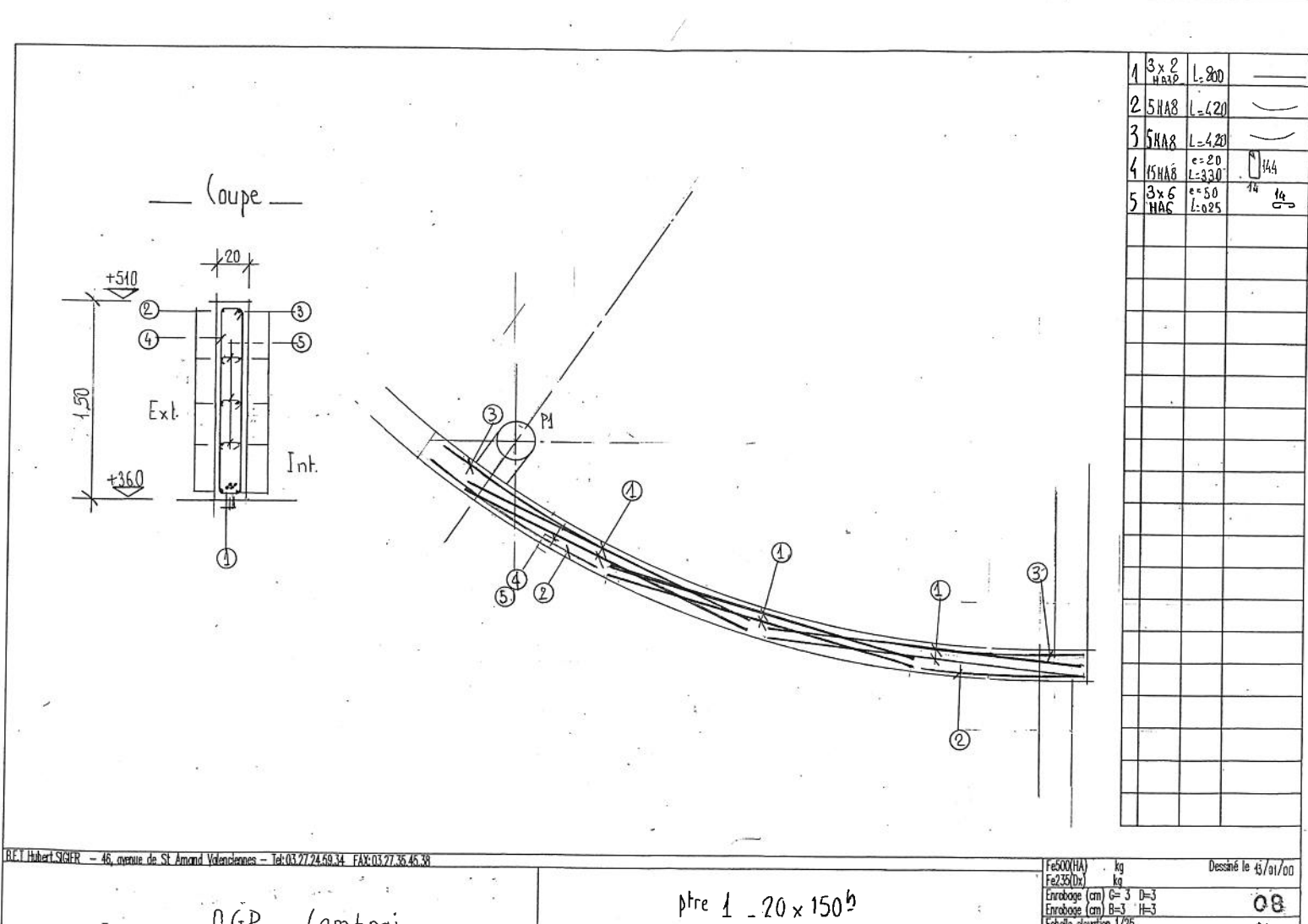
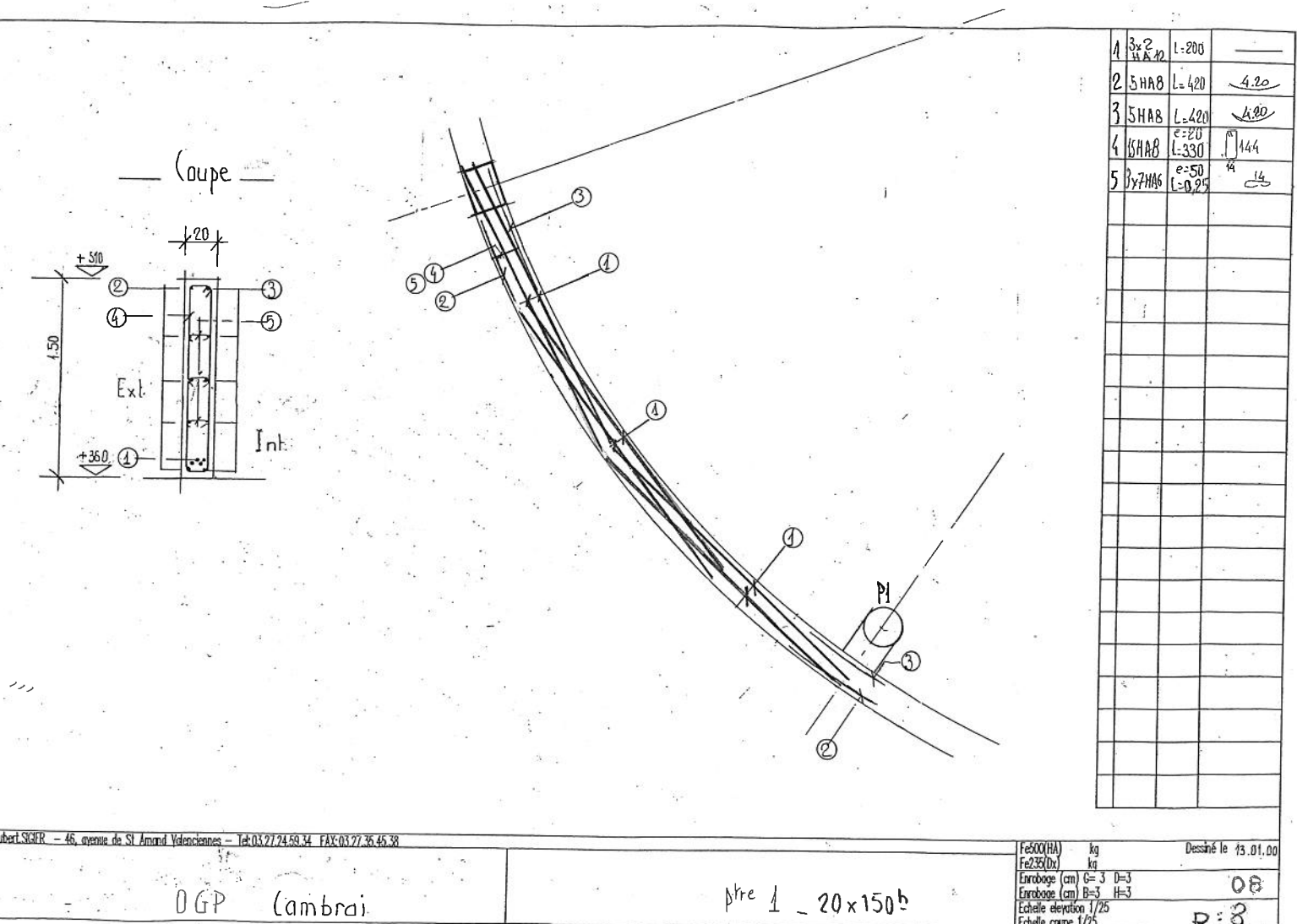
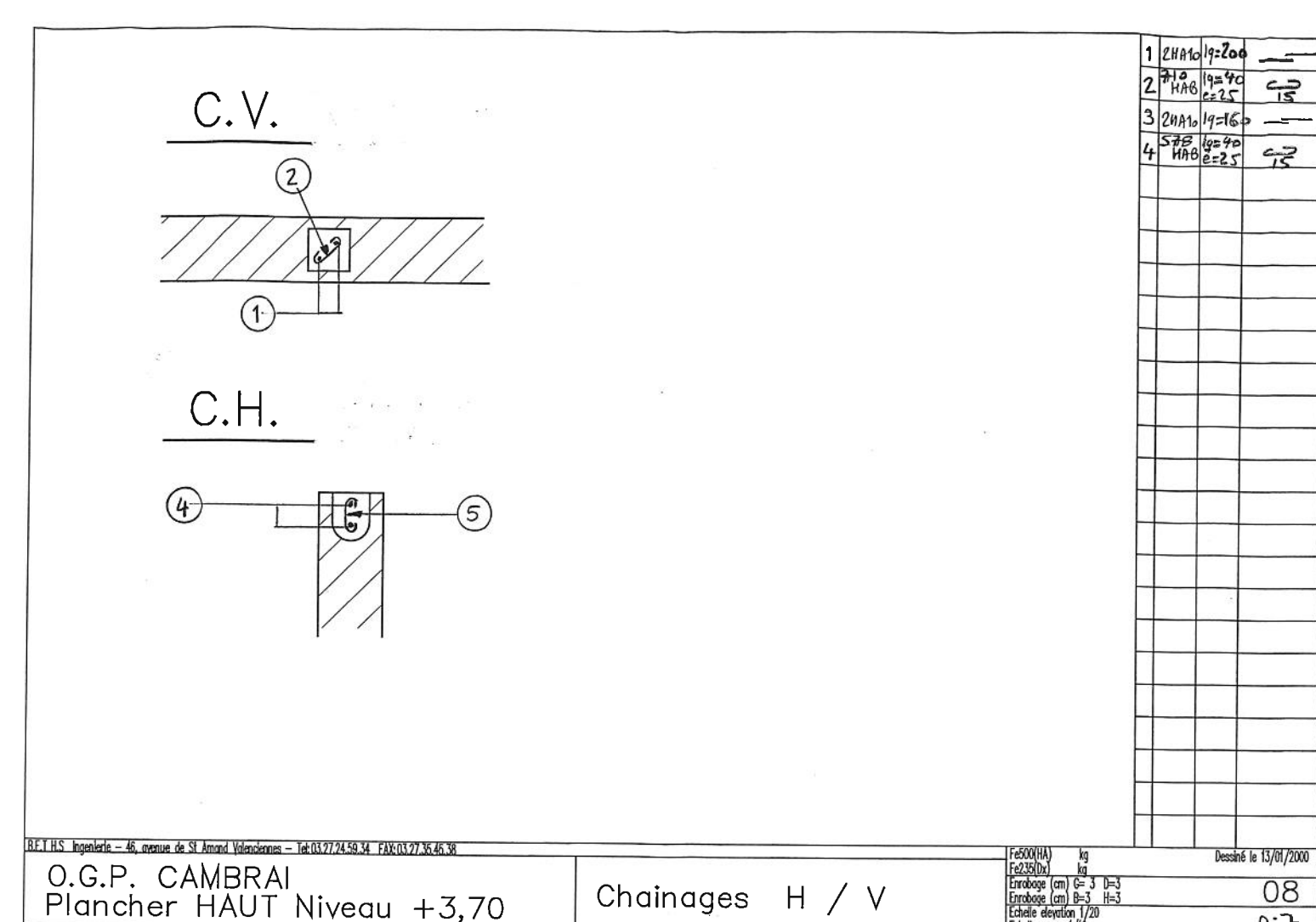
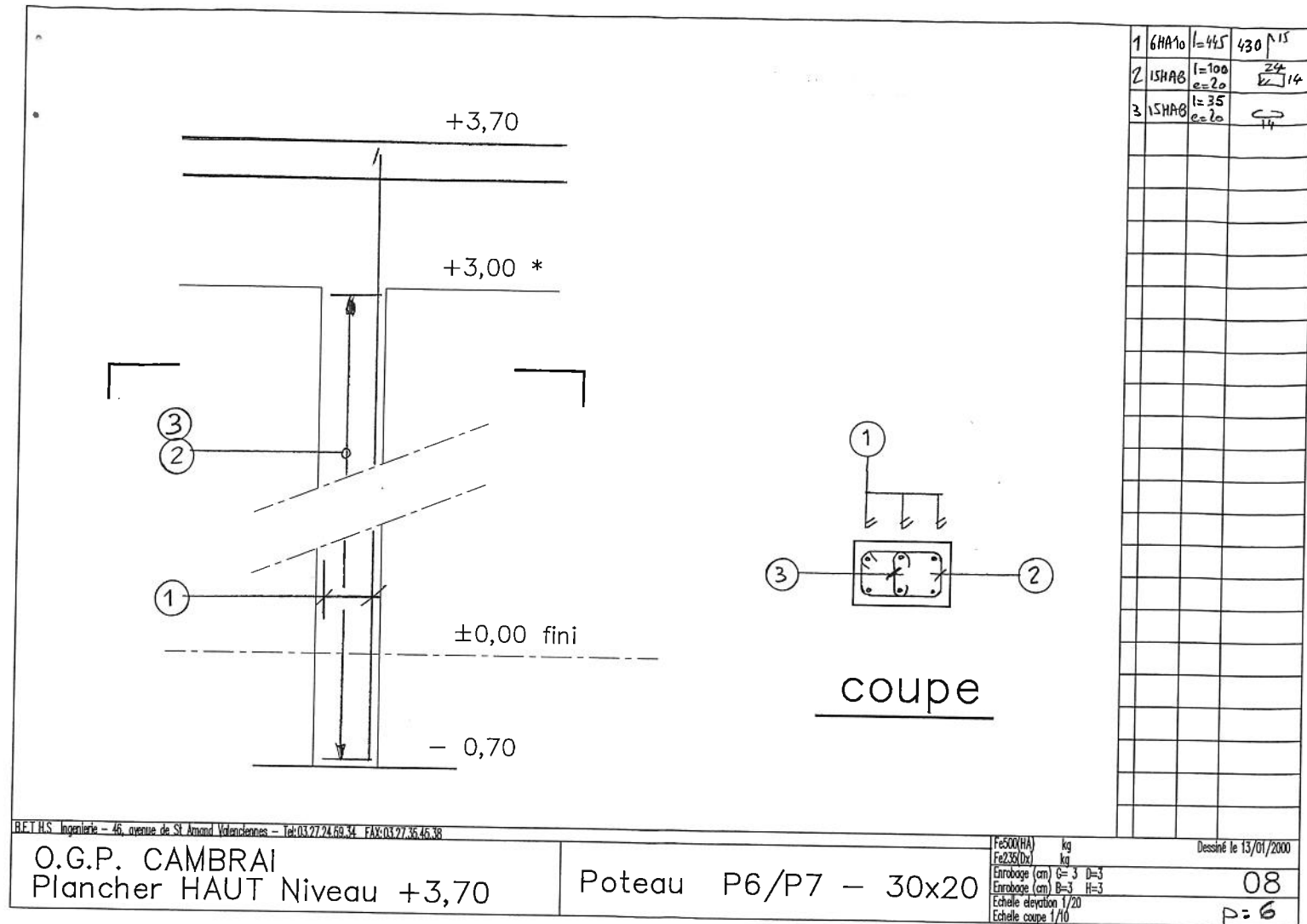
**HUBERT SIGIER**

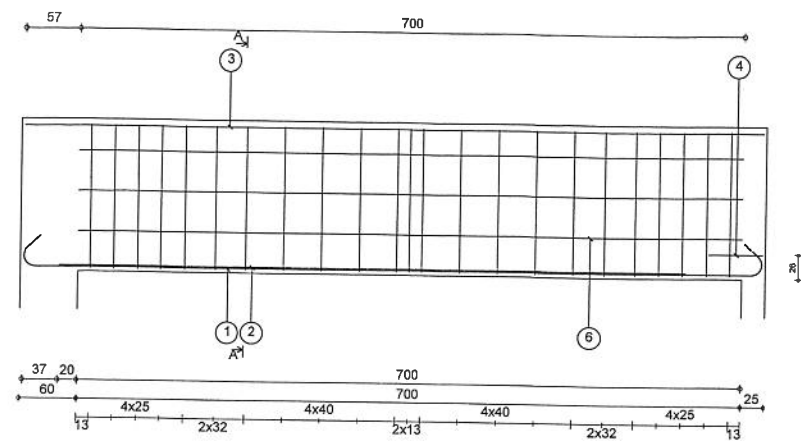
**TEL: 03.27.24.59.34**

**INGENIEUR CONSEIL**

**FAX: 03.27.35.45.38**







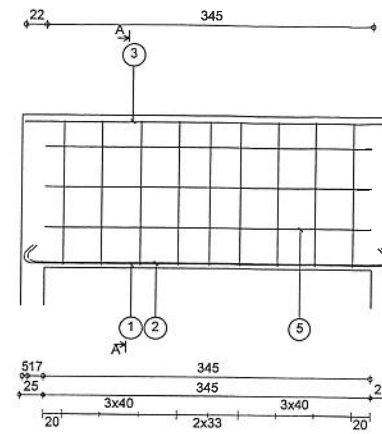
1	2HA20	l=847	779
2	2HA14	l=662	662
3	2HA10	l=779	779
4	1HA8	l=122	57 12 57
5	23HA8	l=342 es=25	151 14
6	6HA6	l=700	700
7	69HA6	l=29	14

B.E.T. SIGIER - 46, Av de Saint Amand 59300 VALENCIENNES - Tel : 03 27 24 59 34 - Fax : 03 27 35 45 38

Haut RDC  
OGP Cambrai

2  
Section 20x160

Acapulco V4.1 Fe500(HA) 113 kg  
Fe235(Dx) 0 kg Beton (B25) = 2.240 m3  
Enrobage (cm) G=3 D=3 08  
Enrobage (cm) B=3 H=6  
Echelle elevation 1/40  
Echelle coupe 1/20 p: 10



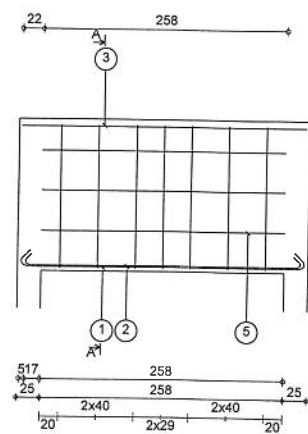
1	2HA12	l=427	389
2	2HA10	l=413	379
3	2HA8	l=389	389
4	9HA8	l=342 es=40	151 14
5	6HA6	l=345	345
6	27HA6	l=29	14

B.E.T. SIGIER - 46, Av de Saint Amand 59300 VALENCIENNES - Tel : 03 27 24 59 34 - Fax : 03 27 35 45 38

Haut RDC  
OGP Cambrai

3  
Section 20x160

Acapulco V4.1 Fe500(HA) 34 kg  
Fe235(Dx) 0 kg Beton (B25) = 1.104 m3  
Enrobage (cm) G=3 D=3 08  
Enrobage (cm) B=3 H=6  
Echelle elevation 1/40  
Echelle coupe 1/20 p: 11



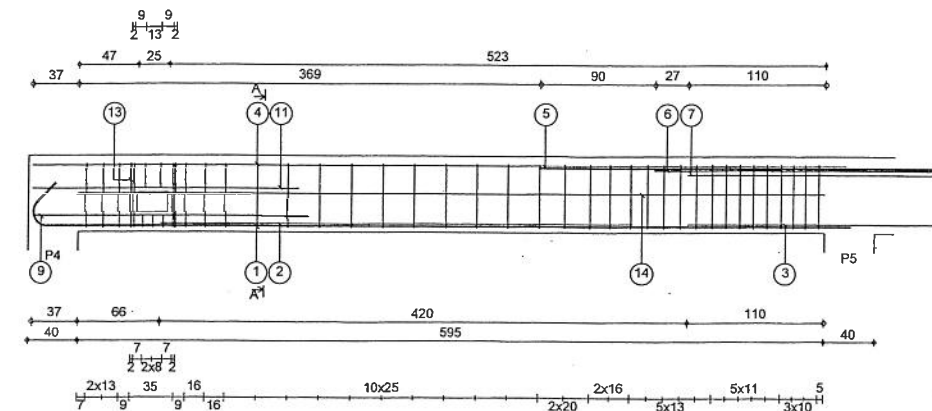
1	2HA12	l=340	302
2	2HA8	l=318	292
3	2HA8	l=302	302
4	7HA8	l=342 es=40	151 14
5	6HA6	l=258	258
6	21HA6	l=29	14

B.E.T. SIGIER - 46, Av de Saint Amand 59300 VALENCIENNES - Tel : 03 27 24 59 34 - Fax : 03 27 35 45 38

Haut RDC  
OGP Cambrai

4  
Section 20x160

Acapulco V4.1 Fe500(HA) 25 kg  
Fe235(Dx) 0 kg Beton (B25) = 0.826 m3  
Enrobage (cm) G=3 D=3 08  
Enrobage (cm) B=3 H=6  
Echelle elevation 1/40  
Echelle coupe 1/20 p: 12



1	2HA20	l=686	652
2	2HA14	l=376	376
3	2HA14	l=259	259
4	2HA8	l=649	649
5	2HA20	l=471	471
6	2HA16	l=312	312
7	2HA14	l=259	259
8	35HA8	l=142 es=13	51 14
9	2HA12	l=222	222
10	3HA8	l=60 es=8	10 14
11	2HA10	l=213	213
12	2HA8	l=80 es=13	20 14
13	4HA8	l=142 es=2	51 14
14	2HA6	l=595	595
15	35HA6	l=29	14

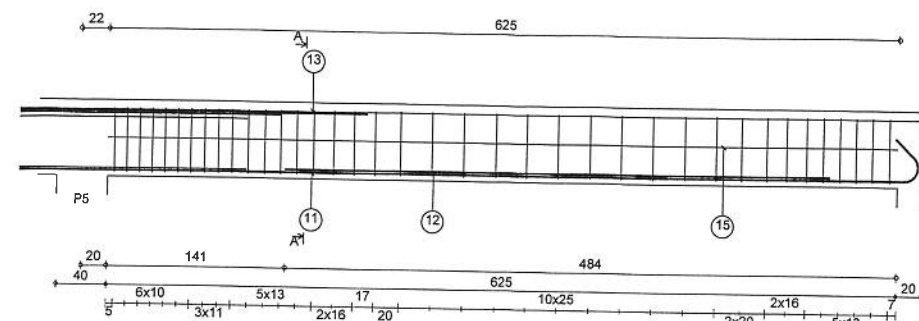
B.E.T. SIGIER - 46, Av de Saint Amand 59300 VALENCIENNES - Tel : 03 27 24 59 34 - Fax : 03 27 35 45 38

Haut RDC  
OGP Cambrai

5  
Section 20x60

Acapulco V4.1 Fe500(HA) 128 kg  
Fe235(Dx) 0 kg Beton (B25) = 0.714 m3  
Enrobage (cm) G=3 D=3 08  
Enrobage (cm) B=3 H=6  
Echelle elevation 1/30  
Echelle coupe 1/15 p: 13



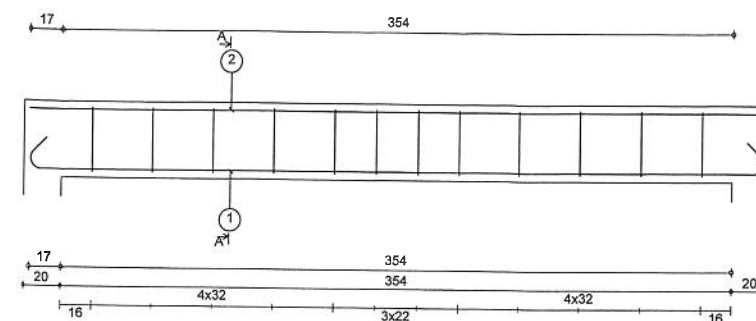


B.E.T. SIGIER - 46, Av de Saint Amand 59300 VALENCIENNES - Tel : 03 27 24 59 34 - Fax : 03 27 35 45 38

**Haut RDC**  
OGP Cambrai

6  
Section 20x60

Acapulco V4.1	Fe500(HA) 87 kg	
	Fe235(Dx) 0 kg	Beton (B25) = 0.750 m3
	Enrobage (cm) G=3 D=3	08
	Enrobage (cm) B=3 H=6	
	Echelle elevation 1/30	
	Echelle coupe 1/15	p:14

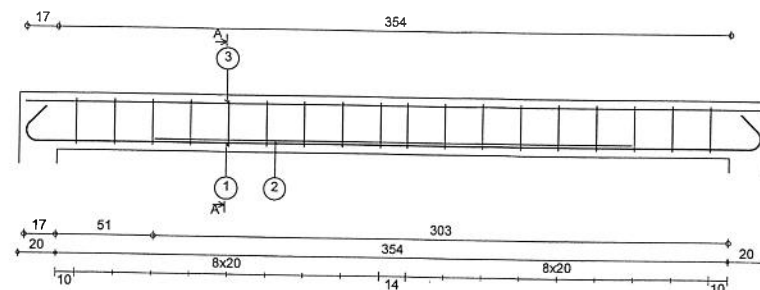


B.E.T. SIGIER - 46, Av de Saint Amand 59300 VALENCIENNES - Tel : 03 27 24 59 34 - Fax : 03 27 35 45 38

**Haut RDC**  
OGP Cambrai

Lf1-Lf3-inf  
Section 20x40

(x2)	Acapulco V4.1	Fe500(HA) 13 kg	
		Fe235(Bx) 0 kg	Beton (B25) = 0.283 m3
		Enrobage (cm) G=3 D=3	08
		Enrobage (cm) B=3 H=3	
		Echelle elevation 1/20	
	Echelle coupe 1/10		p:15

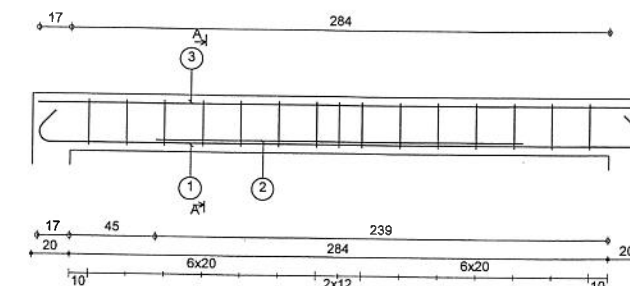


B.E.T. SIGIER - 46, Av de Saint Amand 59300 VALENCIENNES - Tel : 03 27 24 59 34 - Fax : 03 27 35 45 38

Haut RDC  
OGP Cambrai

Lf1-Lf3-sup  
Section 20x30

(x2)	Acapulco V4.1	Fe500(HA) 20 kg	
		Fe235(Dx) 0 kg	Beton (B25) = 0.212 m3
		Enrobage (cm) G=3 D=3	08
		Enrobage (cm) B=3 H=3	
		Echelle elevation 1/20	p:16
		Echelle coupe 1/10	



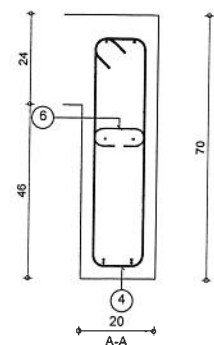
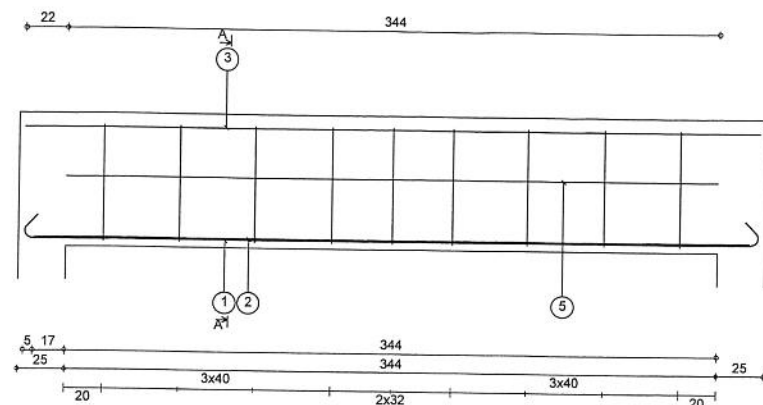
B.E.T. SIGIER - 46, Av de Saint Amand 59300 VALENCIENNES - Tel : 03 27 24 59 34 - Fax : 03 27 35 45 38

**Haut RDC**  
OGP Cambrai

Lf2  
Section 20x30

Acapulco V4.1	Fe500(HA) 14 kg			
	Fe235(Dx) 0 kg	Beton (B25) = 0.170 m3		
	Enrobage (cm) G=3 D=3	08		
	Enrobage (cm) B=3 H=3			
	Echelle elevation 1/20			
	Echelle coupe 1/10	p=19		





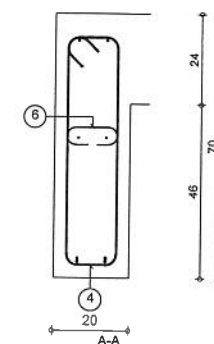
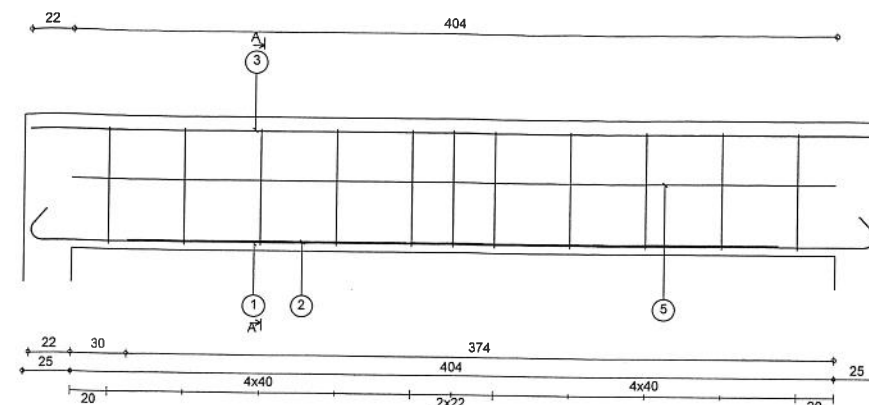
1	2HA8	l=414	388
2	2HA8	l=378	378
3	2HA8	l=388	388
4	9HA8	l=162 es=40	61 14
5	2HA6	l=344	344
6	9HA6	l=29	14

B.E.T. SIGIER - 46, Av de Saint Amand 59300 VALENCIENNES - Tel : 03 27 24 59 34 - Fax : 03 27 35 45 38

**Haut RDC**  
OGP Cambrai

**Lf8**  
Section 20x70

Acapulco V4.1 Fe500(HA) 17 kg  
Fe235(Dx) 0 kg  
Enrobage (cm) G=3 D=3  
Enrobage (cm) B=3 H=6  
Echelle elevation 1/20  
Echelle coupe 1/10  
08  
p:22



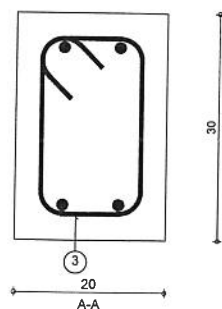
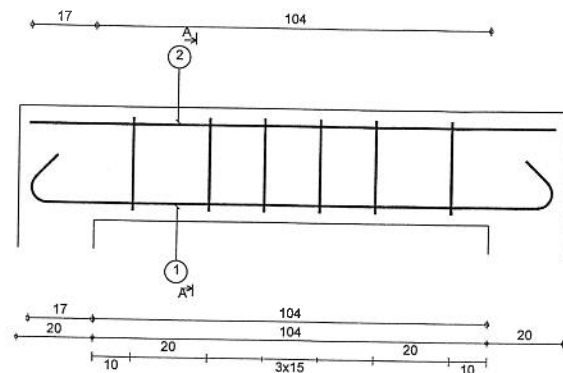
1	2HA10	l=482	448
2	2HA8	l=344	344
3	2HA8	l=448	448
4	11HA8	l=162 es=40	61 14
5	2HA6	l=404	404
6	11HA6	l=29	14

B.E.T. SIGIER - 46, Av de Saint Amand 59300 VALENCIENNES - Tel : 03 27 24 59 34 - Fax : 03 27 35 45 38

**Haut RDC**  
OGP Cambrai

**Lf9-Lf10-Lf11**  
Section 20x70

Acapulco V4.1 Fe500(HA) 22 kg  
Fe235(Dx) 0 kg  
Enrobage (cm) G=3 D=3  
Enrobage (cm) B=3 H=6  
Echelle elevation 1/20  
Echelle coupe 1/10  
08  
p:23



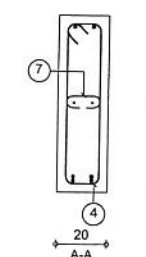
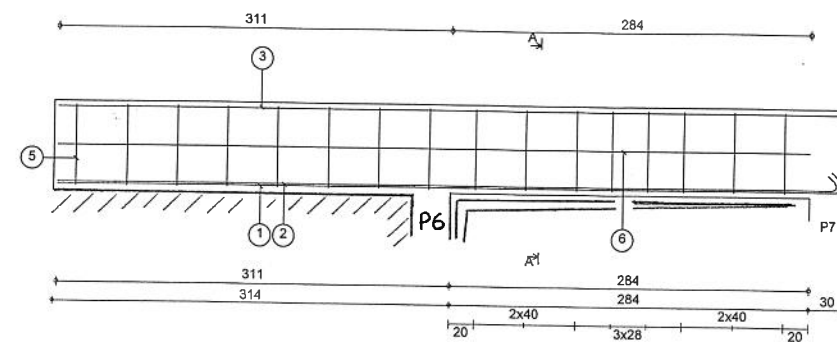
1	2HA8	l=164	138
2	2HA8	l=138	138
3	6HA8	l=88 es=20	24 14

B.E.T. SIGIER - 46, Av de Saint Amand 59300 VALENCIENNES - Tel : 03 27 24 59 34 - Fax : 03 27 35 45 38

**Haut RDC**  
OGP Cambrai

**L1-L2-L3**  
Section 20x30

Acapulco V4.1 Fe500(HA) 4 kg  
Fe235(Dx) 0 kg  
Enrobage (cm) G=3 D=3  
Enrobage (cm) B=3 H=3  
Echelle elevation 1/10  
Echelle coupe 1/5  
08  
p:24



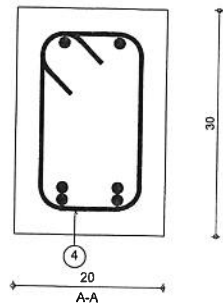
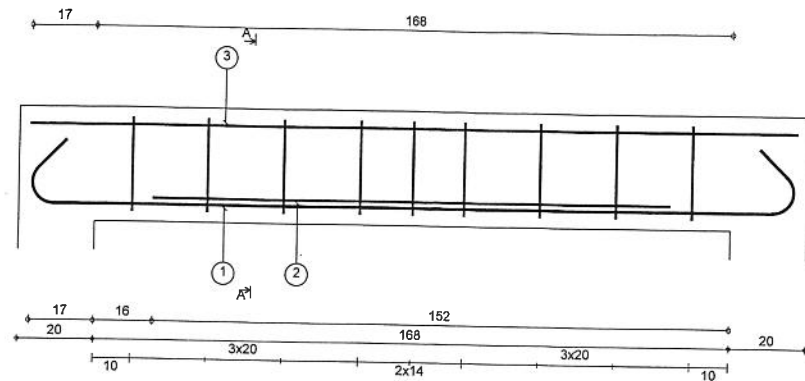
1	2HA10	l=639	622
2	2HA8	l=630	617
3	2HA8	l=622	622
4	8HA8	l=168 es=40	64 14
5	8HA8	l=168 es=40	64 14
6	2HA6	l=595	595
7	16HA6	l=29	14

B.E.T. SIGIER - 46, Av de Saint Amand 59300 VALENCIENNES - Tel : 03 27 24 59 34 - Fax : 03 27 35 45 38

**Haut RDC**  
OGP Cambrai

**L4**  
Section 20x70

Acapulco V4.1 Fe500(HA) 32 kg  
Fe235(Dx) 0 kg  
Enrobage (cm) G=3 D=3  
Enrobage (cm) B=3 H=3  
Echelle elevation 1/30  
Echelle coupe 1/15  
08  
p:25



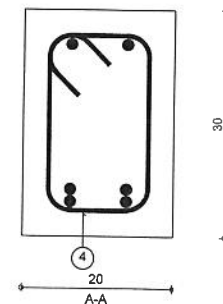
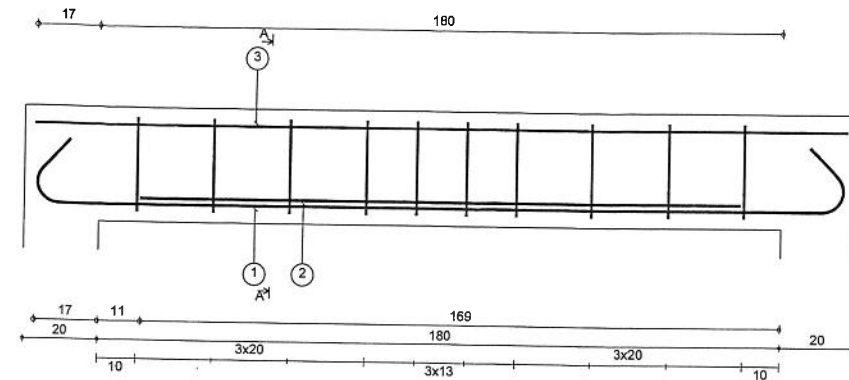
1	2HA10	l=236	202
2	2HA8	l=136	136
3	2HA8	l=202	202
4	9HA8	l=88 es=20	24 14

B.E.T. SIGIER - 46, Av de Saint Amand 59300 VALENCIENNES - Tel : 03 27 24 59 34 - Fax : 03 27 35 45 38

Haut RDC  
OGP Cambrai

L5  
Section 20x30

Acapulco V4.1	Fe500(HA) 9 kg	Beton (B25) = 0.101 m3
	Fe235(Dx) 0 kg	
	Enrobage (cm) G=3 D=3	08
	Enrobage (cm) B=3 H=3	
	Echelle elevation 1/10	
	Echelle coupe 1/5	p:26



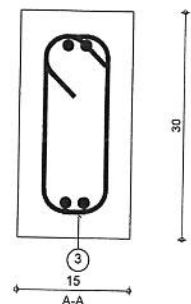
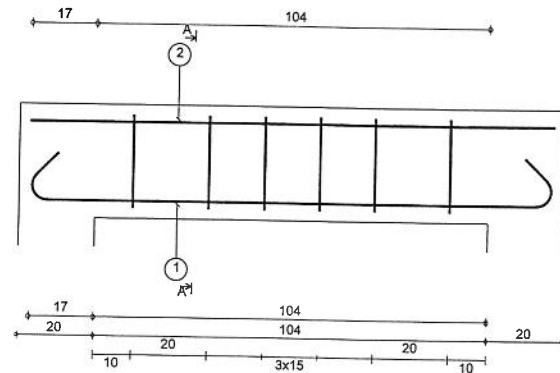
1	2HA10	l=248	214
2	2HA10	l=158	158
3	2HA8	l=214	214
4	10HA8	l=88 es=20	24 14

B.E.T. SIGIER - 46, Av de Saint Amand 59300 VALENCIENNES - Tel : 03 27 24 59 34 - Fax : 03 27 35 45 38

Haut RDC  
OGP Cambrai

L6  
Section 20x30

Acapulco V4.1	Fe500(HA) 10 kg	Beton (B25) = 0.108 m3
	Fe235(Dx) 0 kg	
	Enrobage (cm) G=3 D=3	08
	Enrobage (cm) B=3 H=3	
	Echelle elevation 1/10	
	Echelle coupe 1/5	p:27



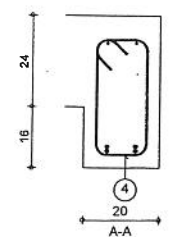
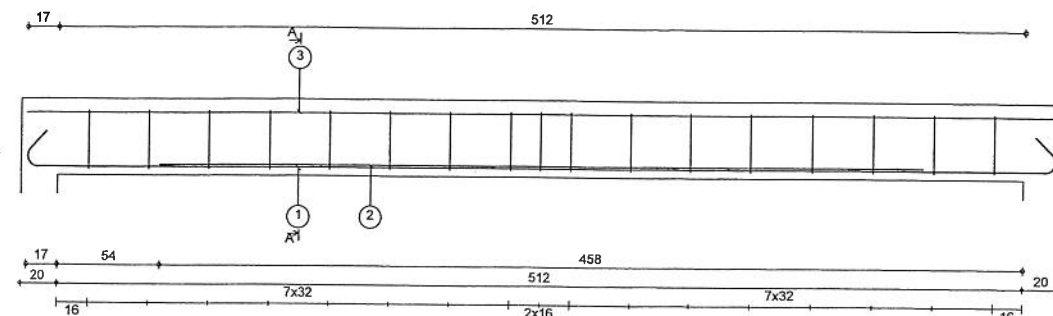
1	2HA8	l=164	138
2	2HA8	l=138	138
3	6HA8	l=78 es=20	24 9

B.E.T. SIGIER - 46, Av de Saint Amand 59300 VALENCIENNES - Tel : 03 27 24 59 34 - Fax : 03 27 35 45 38

Haut RDC  
OGP Cambrai

L7-L8  
Section 15x30

Acapulco V4.1	Fe500(HA) 4 kg	Beton (B25) = 0.047 m3
	Fe235(Dx) 0 kg	
	Enrobage (cm) G=3 D=3	08
	Enrobage (cm) B=3 H=3	
	Echelle elevation 1/10	
	Echelle coupe 1/5	p:28



1	2HA12	l=584	546
2	2HA12	l=404	404
3	2HA8	l=546	546
4	17HA8	l=102 es=32	31 14

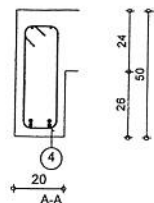
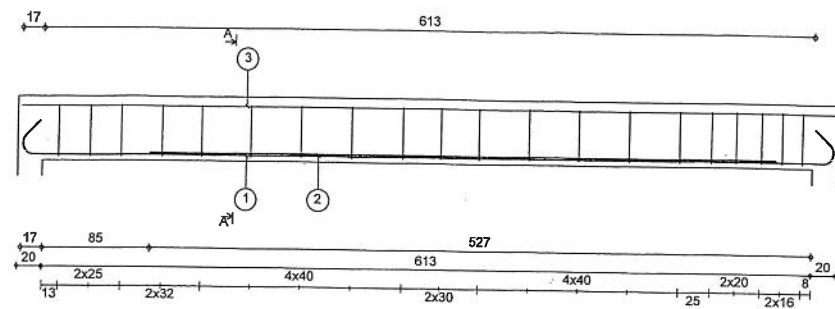
B.E.T. SIGIER - 46, Av de Saint Amand 59300 VALENCIENNES - Tel : 03 27 24 59 34 - Fax : 03 27 35 45 38

Haut RDC  
OGP Cambrai

7  
Section 20x40

Acapulco V4.1	Fe500(HA) 29 kg	Beton (B25) = 0.410 m3
	Fe235(Dx) 0 kg	
	Enrobage (cm) G=3 D=3	08
	Enrobage (cm) B=3 H=6	
	Echelle elevation 1/20	
	Echelle coupe 1/10	p:29





1	2HA16	l=699	647
2	2HA16	l=498	498
3	2HA8	l=647	647
4	20HA8	l=122 es=25	41 14

B.E.T. SIGIER - 46, Av de Saint Amand 59300 VALENCIENNES - Tel : 03 27 24 59 34 - Fax : 03 27 35 45 38

Haut RDC  
OGP Cambrai

8  
Section 20x50

Acapulco V4.1  
Fe500(HA) 53 kg  
Fe235(Dx) 0 kg  
Enrobage (cm) G=3 D=3  
Enrobage (cm) B=3 H=6  
Echelle elevation 1/30  
Echelle coupe 1/15  
08  
P 30